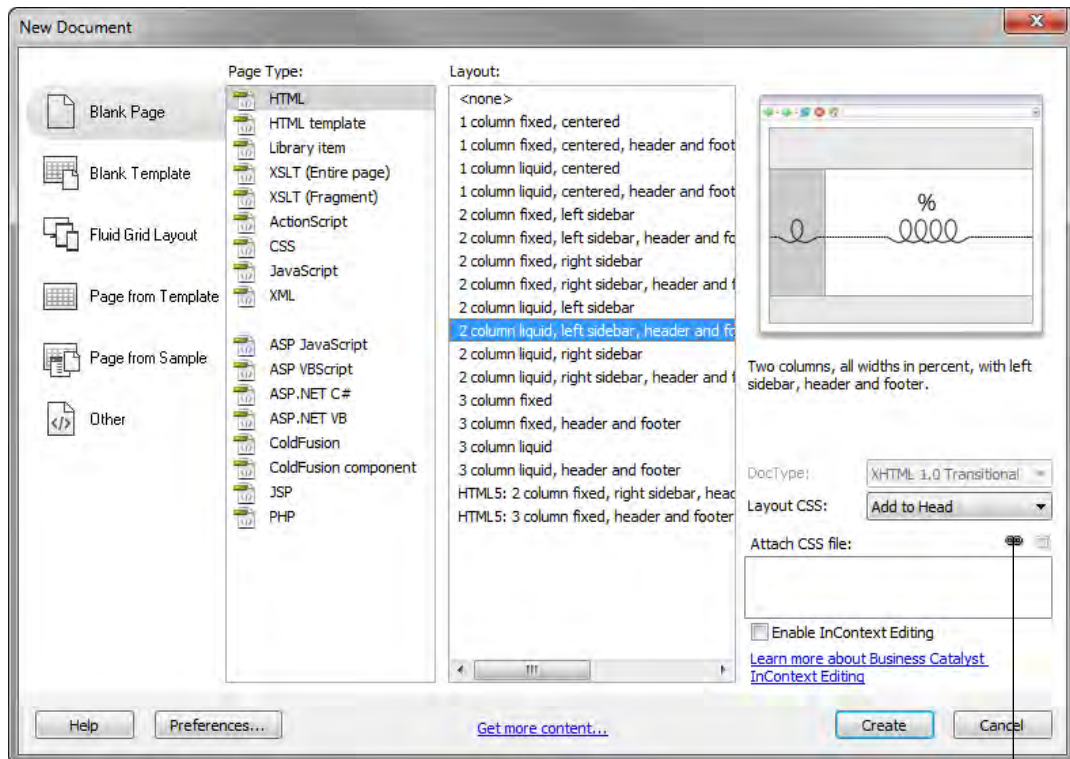


## How to use CSS starter layouts

When creating a new document in Dreamweaver, you can choose one that already contains a CSS layout. Dreamweaver comes with many different CSS layouts from which to choose (**Figure 1**). The predesigned CSS layouts provide the following types of columns:

- *Liquid layouts* specify column width as a percentage of the site visitor's browser width. The design adapts if the site visitor makes the browser wider or narrower, but does not change based on the site visitor's text settings.
- *Fixed layouts* specify column width in pixels. The column does not resize based on the size of the browser or the site visitor's text settings.

The New Document dialog box also includes two options for HTML5 and CSS layouts.



Attach Style Sheet button

**Figure 1** New Document dialog box

### Using a starter layout

Starter layouts are available as an option in the New Document dialog box.

*To use a starter layout:*

1. Start Dreamweaver.
2. Select File > New.

The New Document dialog box opens (**Figure 1**).

3. Select the Blank Page category if not already selected.
4. For Page Type, select HTML.

5. For Layout, select the CSS layout you want to use.

You can choose from 16 different layouts. The Preview window shows the layout and gives a brief description of the selected layout.

The selection illustrated in **Figure 1** is a 2-column liquid layout with a left sidebar, header, and footer is selected.

6. Select a location for the layout's CSS from the Layout CSS pop-up menu:
- *Add To Head* adds CSS for the layout to the head of the page you're creating.
  - *Create New File* adds CSS for the layout to a new external CSS stylesheet and attaches the new stylesheet to the page you're creating.
  - *Link To Existing File* lets you specify an existing CSS file that already contains the CSS rules needed for the layout. This option is particularly useful when you want to use the same CSS layout (the CSS rules for which are contained in a single file) across multiple documents.

7. Do one of the following:

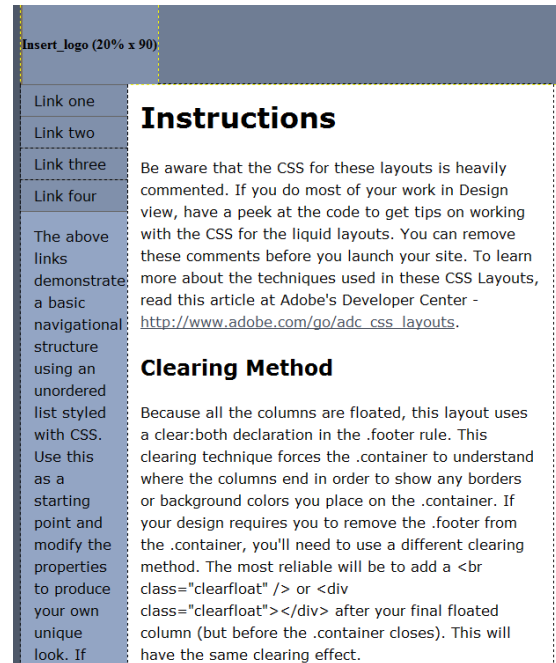
- If you selected Add To Head from the Layout CSS pop-up menu (the default option), click Create.
- If you selected Create New File from the Layout CSS pop-up menu, click Create, and then specify a name for the new external file in the Save Style Sheet File As dialog box.
- If you selected Link To Existing File from the Layout CSS pop-up menu, add the external file to the Attach CSS File text box by clicking the Attach Style Sheet button, completing the Attach External Style Sheet dialog box, and clicking OK. When you're finished, click Create in the New Document dialog box.

**Note:** When you select the Link To Existing File option, the file you specify must already have the rules for the CSS file contained within it.

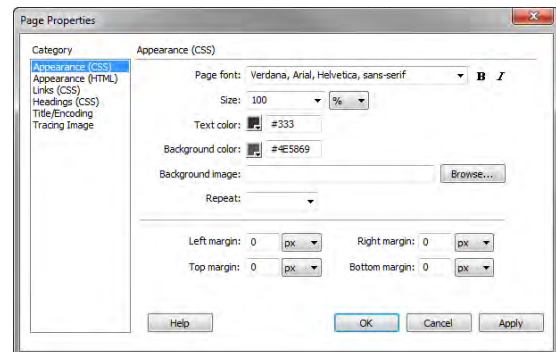
When you put the layout CSS in a new file or link to an existing file, Dreamweaver automatically links the file to the HTML page you're creating.

The layout opens in Dreamweaver (**Figure 2**).

8. (Optional) You can modify some aspects of a page (font, font size, colors and margins) after it's created by selecting Modify > Page Properties to open the Page Properties dialog box (**Figure 3**).



**Figure 2** Dreamweaver CSS starter layout



**Figure 3** Page Properties dialog box