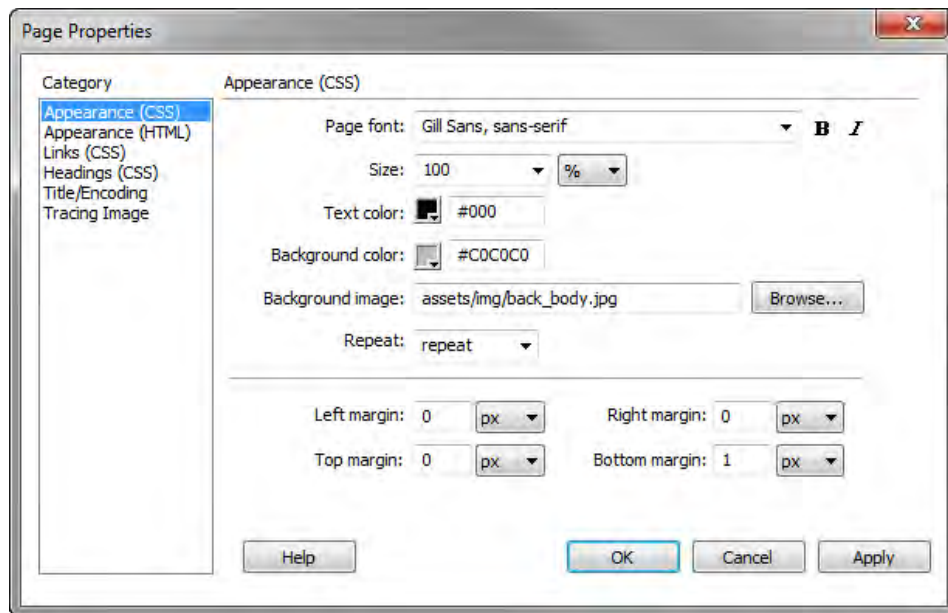


## How to set document properties

For each page you create in Dreamweaver, you can specify layout and formatting properties by using the Page Properties dialog box (**Figure 1**). The Page Properties dialog box lets you specify the default font family and font size, background color, margins, link styles, and many other aspects of page design. You can assign new page properties for each new page you create, and modify those for existing pages. You can also change the Document Type Declaration in the Title/Encoding category of the Page Properties dialog box. For example, if you wanted to alter a document's DTD from HTML 4.1 to HTML 5. Changes you make in the Page Properties dialog box apply to the entire page.

Dreamweaver gives you two methods for modifying page properties: CSS or HTML. Adobe recommends using CSS to set backgrounds and modify page properties.



**Figure 1** Page Properties dialog box

### Using CSS to set font, colors, margins, and background image properties

Use the Page Properties dialog box to specify several basic page layout options for your web pages, including the font, background color, and background image.

*To set layout and formatting options for a page:*

1. Open a document in Adobe Dreamweaver CS6.
2. Select **Modify > Page Properties** or click the Page Properties button in the text Properties panel.

The Page Properties dialog box opens (**Figure 1**).

3. Select the Appearance (CSS) category and set the options.

*Page Font* specifies the default font family to use for the page. Dreamweaver uses the font family you specify unless another font is specifically set for a text element.

*Size* specifies the default font size to use in the page. Dreamweaver uses the font size you specify unless another font size is specifically set for a text element.

*Text Color* specifies the default color to render fonts with.

*Background Color* sets a background color for your page. Click the Background color box and select a color from the color picker (**Figure 2**).

*Background Image* sets a background image for the page. Click the Browse button, then browse to and select the image. Alternatively, enter the path to the background image in the Background Image text box. Dreamweaver tiles (repeats) the background image if it does not fill the entire window, just as browsers do.

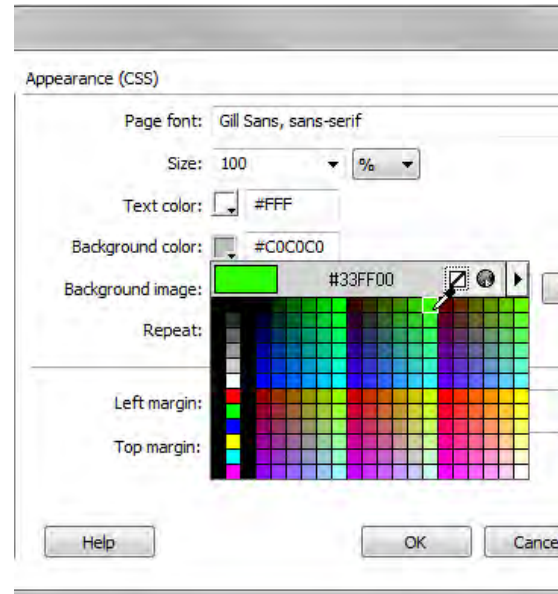
*Repeat text* specifies how the background image will be displayed on the page:

- Select the No-repeat option to display the background image only once.
- Select the Repeat option to repeat, or tile, the image both horizontally and vertically.
- Select the Repeat-x option to tile the image horizontally.
- Select the Repeat-y option to tile the image vertically.

*Left Margin* and *Right Margin* specify the size of the left and right page margins.

*Top Margin* and *Bottom* specify the size of the top and bottom page margins.

4. When you've finished making changes, click Apply to set the properties, and click OK to close the dialog box.



**Figure 2** Set Background Color in the Page Properties dialog box