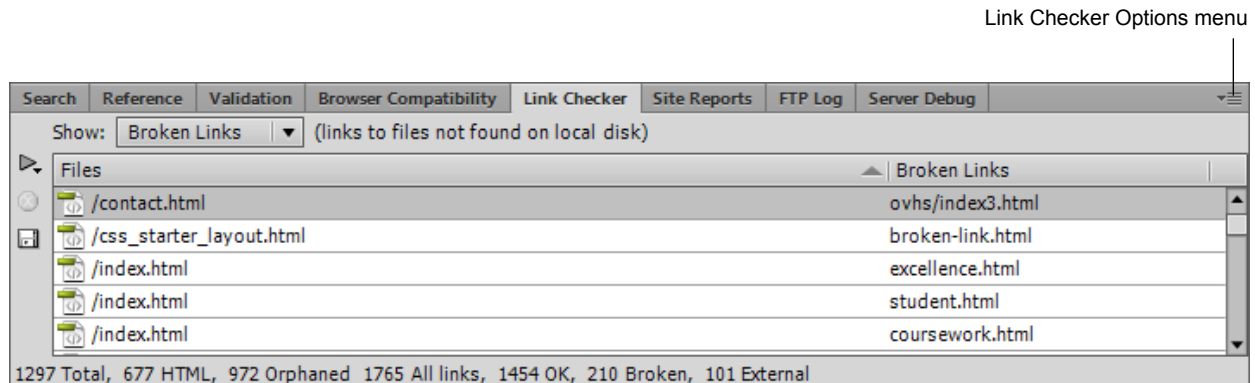


# How to check links

Use the Check Links feature to search for broken links and *orphaned* files (files that still exist in the site but that aren't linked to by any other files in the site) (**Figure 1**). You can search an open file, a portion of a local site, or an entire local site.

## Checking links in a local site



**Figure 1** Link Checker panel

Dreamweaver verifies links only to documents within the site; Dreamweaver compiles a list of external links in the selected document or documents but does not verify them.

You can also identify and delete files that are no longer used by other files in your site.

To check links in a local site:

1. Start Dreamweaver.
2. In the Files panel, select a site from the Current Sites pop-up menu.
3. Select Site > Check Links Sitewide.

The Broken Links report appears in the Link Checker panel (**Figure 1**).

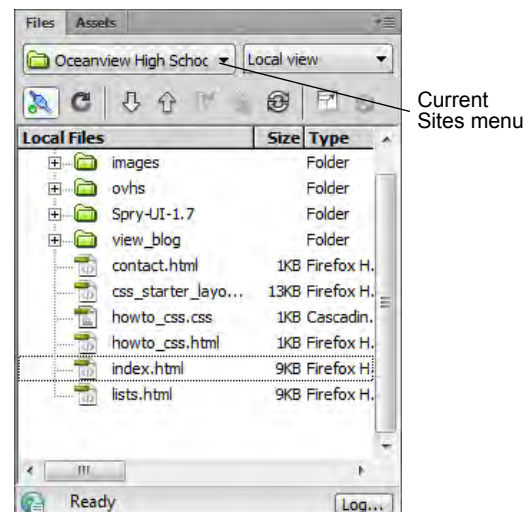
4. In the Link Checker panel, select External Links or Orphaned Files from the Show pop-up menu to view another report.

A list of files that fit the report type you selected appears in the Link Checker panel.

**Note:** If you select Orphaned Files as your report type, you can delete orphaned files from the Link Checker panel by selecting a file in the list and pressing the Delete key.

5. Fix any broken links and check the links again.

**Note:** To clear the current Link Checker results, select Clear Results from the Link Checker Options menu.



**Figure 2** Files panel