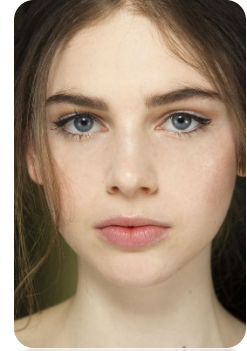


CHANGING EYE COLOR IN PHOTOSHOP

Be Prepared: Make sure you have a picture ready that has a clear view of the eyes and irises. There is going to be a focus on Hue/Saturation as well as different layers and tools being used.

Step 1: Make sure you zoom in. You will need a clear view of the eye and iris and be able to select the iris. I suggest centering both eyes using the hand tool.

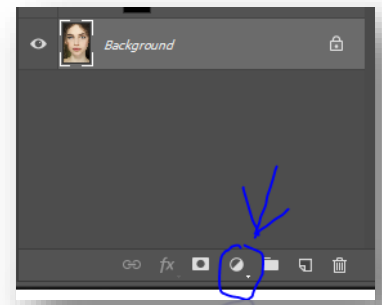


Original Photo

Step 2: Using the Lasso tool, select the iris. After the first eye, hold the shift key and repeat with the second eye. It's alright if you don't make a perfect circle, it can be touched up later.

Step 3: Adding a Hue/Saturation adjustment layer will allow us to change the colors without messing up the original photo. Click on the New Fill or Adjustment Layer icon at the bottom of the control panel. Select Hue/Saturation from the drop down menu.

Step 4: "Colorize" it. There is a box that says "Colorize" in the Properties box. Check that, and you'll know you've done it because the eyes will turn red.



Step 5: Sliders. To change eye color, drag the Hue slider. This is the slider that controls the color spectrum. The slider you're going to use after that is the Saturation slider. This makes the color you've chosen look more natural and less vibrant. A value between 10 and 15 is the typical number for naturalness.



Step 6: Blend Mode. When the blend mode of our adjustment layer is in normal, it is affecting the brightness and the color. We only want color to be affected. To change that we have to change the blend mode to Color. It is in the upper left of the layers panel. They should appear to be brighter.

Step 7: If there is any need for a touch up, in case you missed a few spots or went too far out of the iris, we can use the brush tool to clean it up. We can do this by clicking on the layer mask that was already built in for us. Make sure it is selected by checking to see that there is a white border around a black thumbnail with two white dots in a black area. That is our eyes and showing that those are what are being colorized and the black is unedited. With the brush tool, you can use black to hide color, like you would on the eyeball. Or you can use white to bring out the color in the iris. You can change the color of your brush by changing the foreground to black or white. You can change the size and softness of the brush as well using the Brackets ([]) for size and then holding down the shift key with the brackets for softness/hardness.



Just paint over problem areas using the respective colors and don't forget the pupil. If you want to compare your new image to the original, just turn off the adjustment layer by clicking the eyeball icon next to it.

