



# The UNEQUIVOCAL Power of Blend If

with **BLAKE RUDIS**

# #1 ... MVP Tool in Photoshop

1. Blend If is an incredible tool for protecting and affecting specific areas of your photo, specifically in the luminance areas.
2. Most people will reach for a luminance mask before they reach for Blend If, not because they are better, but because they are more well known.
3. Blend If is the most powerful tool in Photoshop, yet it is the most hidden!
4. Blend if is not in selections or masking, it's in the layer styles

## What is Blend If?

---

The four parts to a Layer in Photoshop:

OPACITY / FILL

BLEND MODE

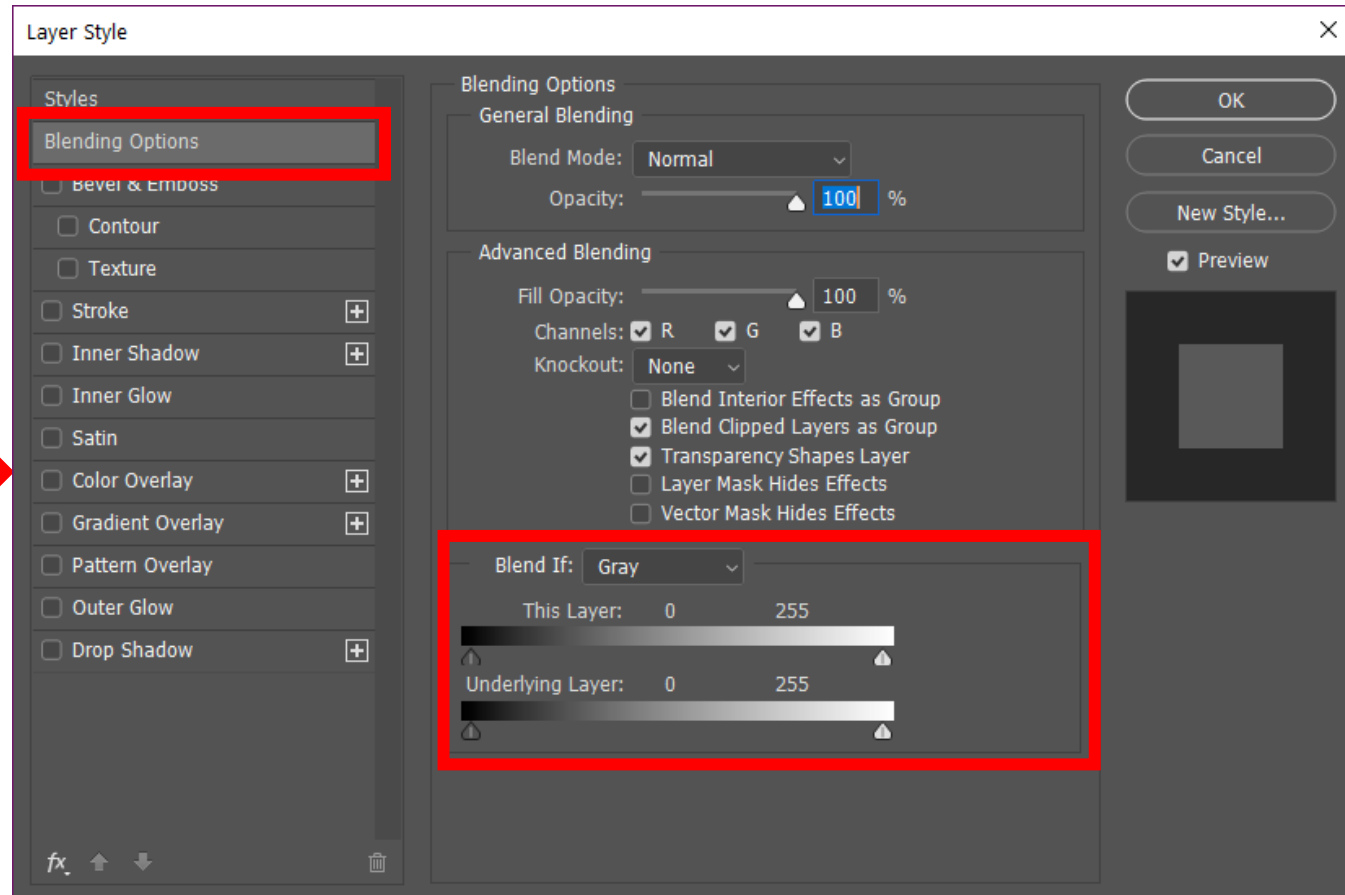
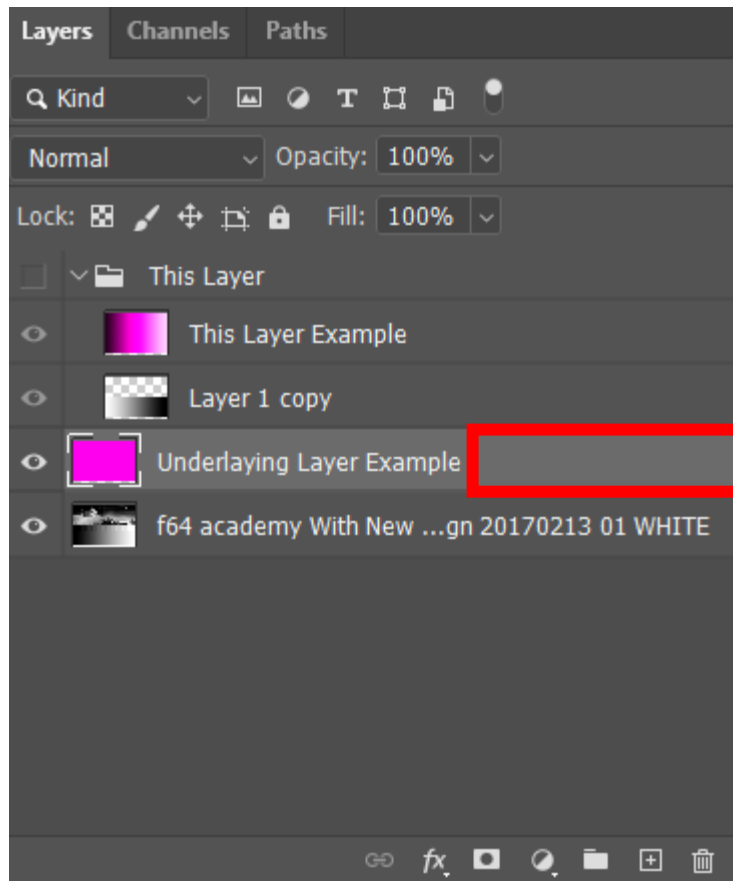
LAYER STYLES

MASK

*Don't think of this as one or nothing but fathom the possibilities of all of them used together!*

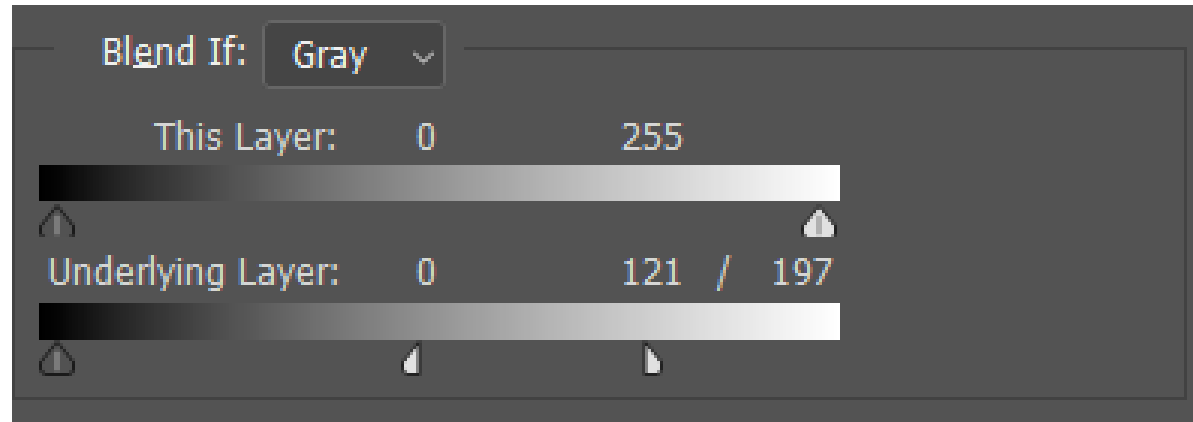
## To Open Layer Styles in ANY Layer:

- Double click in the text next to the words in the layer.
- Blend if is in the Blending Options Section



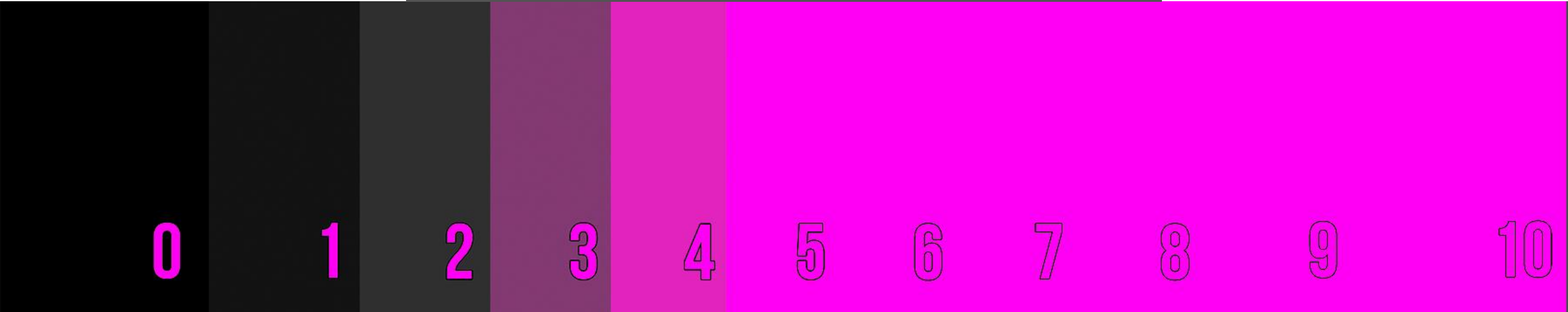
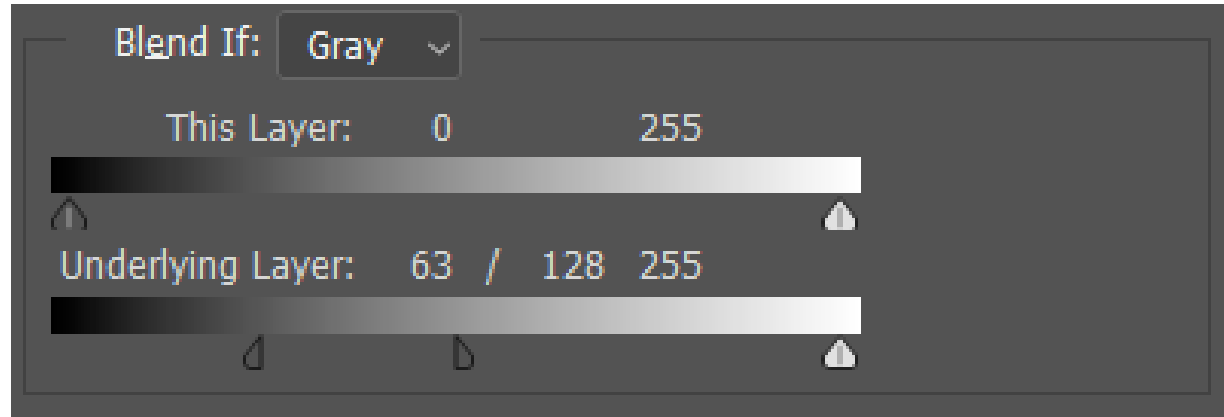
## Protect Shadows Example

---



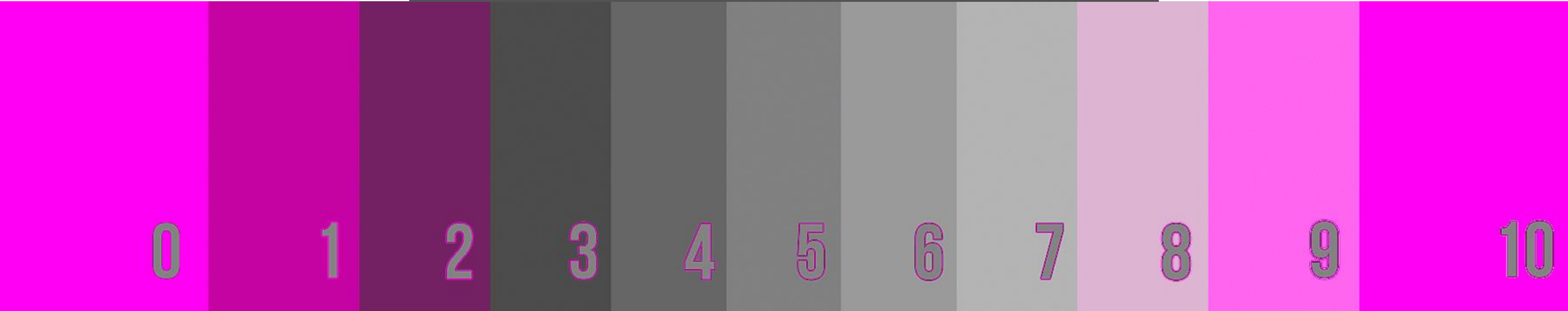
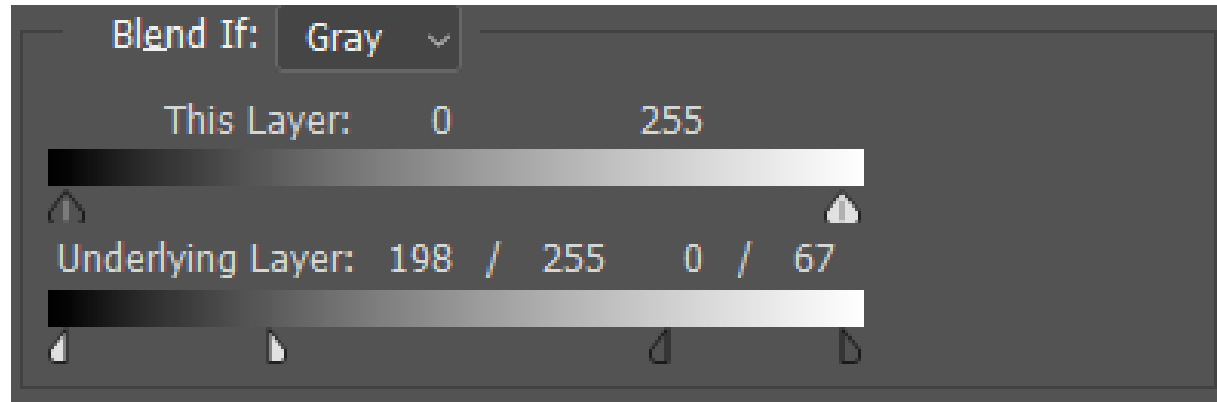
## Protect Highlights Example

---



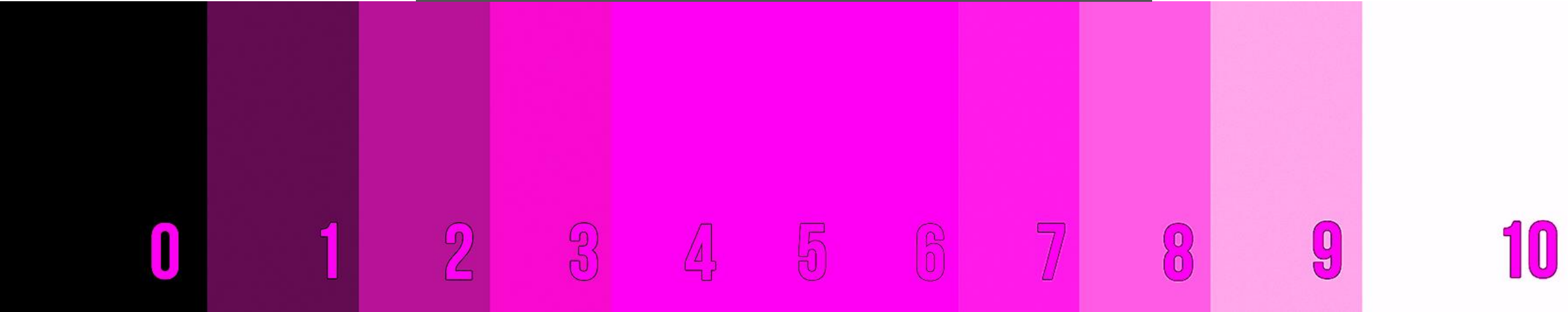
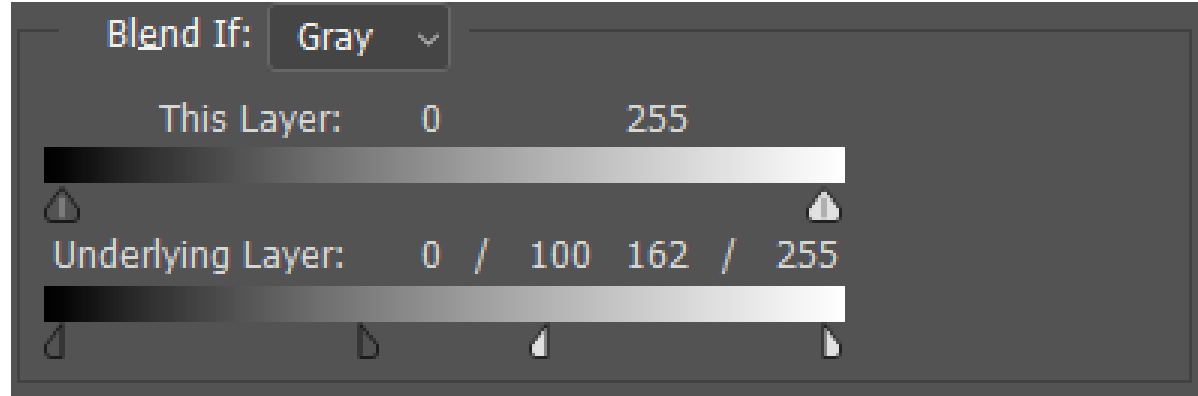
## Protect Midtones Example

---



## Target Midtones Example

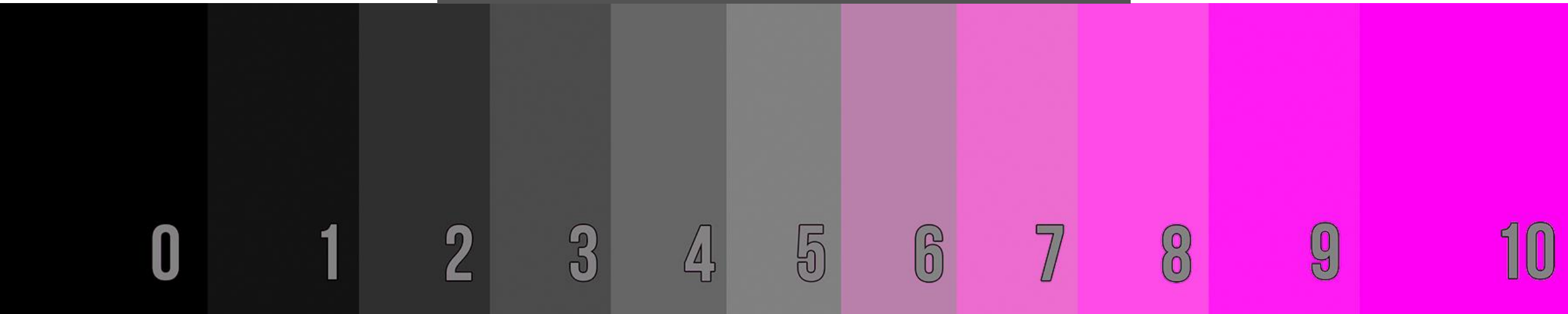
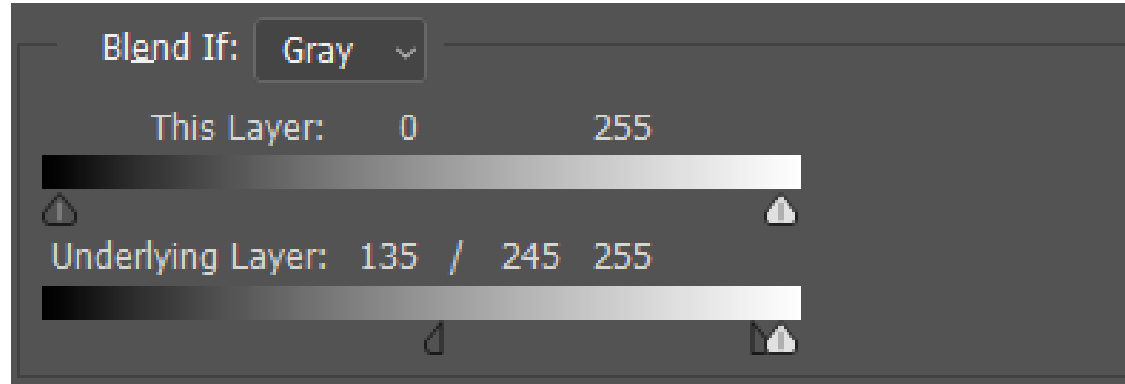
---





## Target Highlights Example

---



## Ideas for use of Blend If

---

It knows no bounds, but here are some ideas:

**NOISE REDUCTION**

**SHARPENING**

**SKY REPLACEMENTS**

**PORTRAIT RETOUCHING**

**TEXTURES**

**VIGNETTES**

**COLOR GRADING**



Want to know all my Ps workflow secrets?

Sign up to f.64 Academy and I will show you how I think about workflow and exactly what you need to know to master yours!

[\*\*Register Today!\*\*](#)