

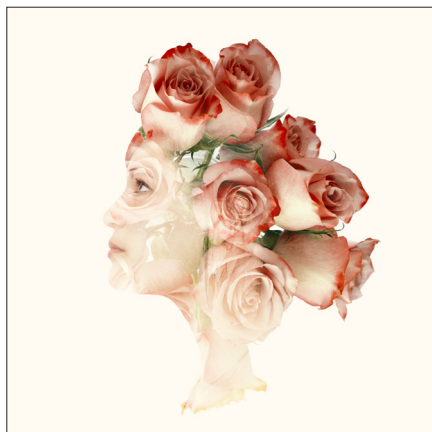


Creating a double-exposure portrait in Photoshop

with

Nicole S. Young

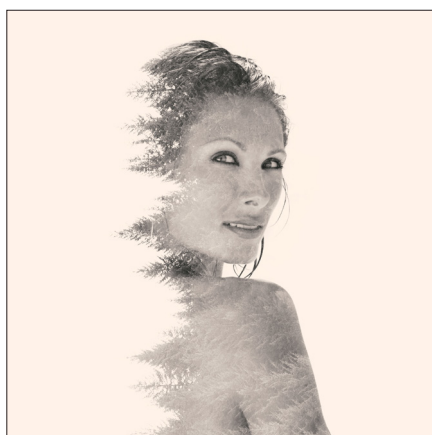
PROJECT 01



PORTRAIT WITH ROSES **3**

Masking the portrait	4
Adding the overlay	6
Expanding the overlay	10
Masking the overlay	11
Finishing touches	12

PROJECT 02



PORTRAIT WITH TREES **16**

Masking the portrait	17
Adding the overlay	19
Adding details	21
Dodging and burning	22
Finishing touches	24

KEYBOARD SHORTCUTS **26**

PROJECT 01

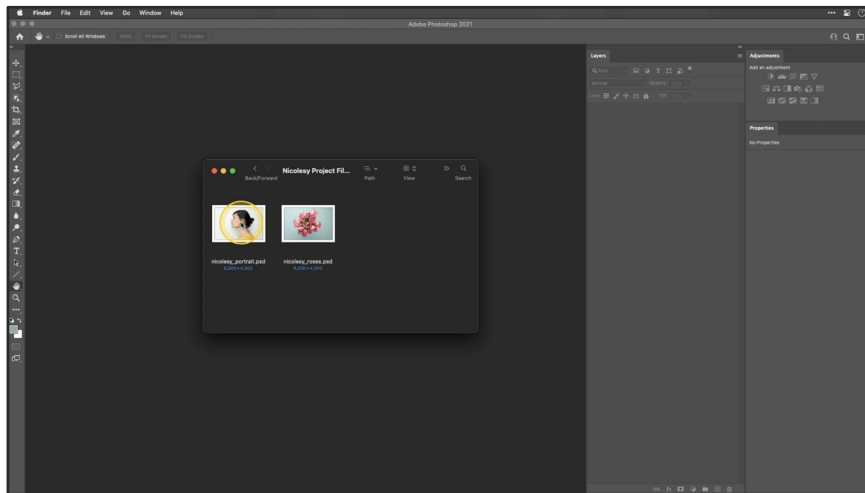
PORTRAIT WITH ROSES



MASKING THE PORTRAIT

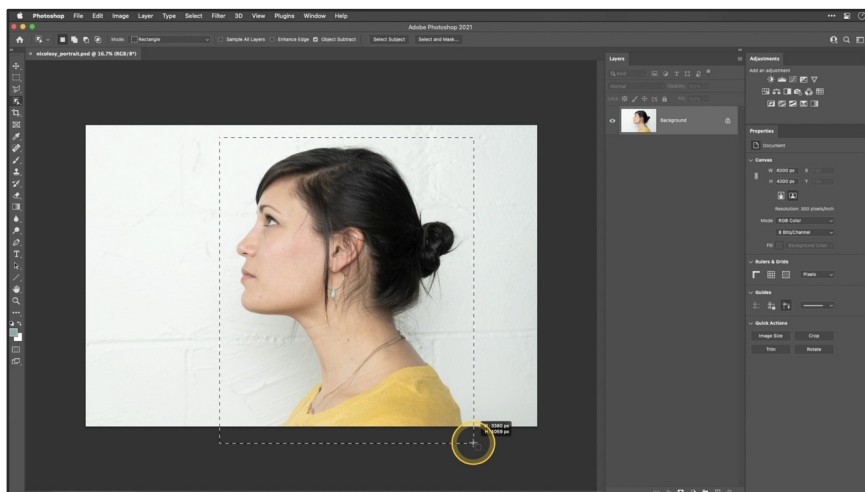
1. Open the portrait image

Access the **NICOLESY_PORTRAIT.PSD** file and open it into Photoshop.



2. Mask the portrait

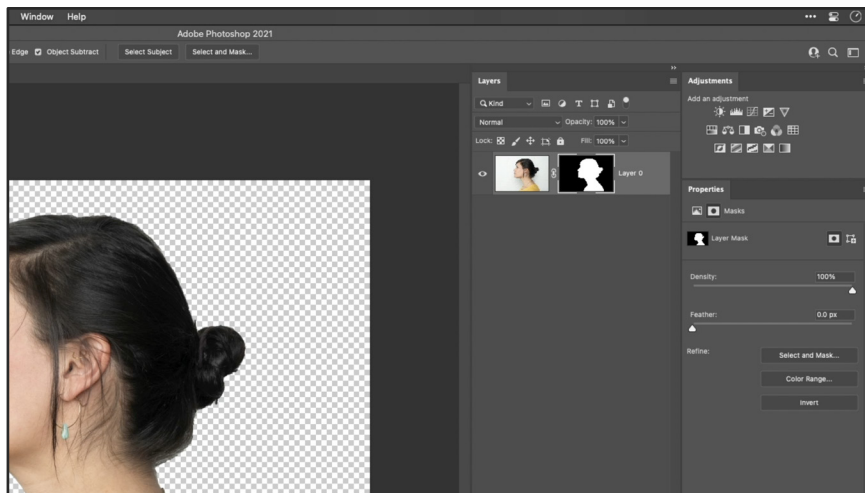
Using the **OBJECT SELECTION TOOL**, drag an outline around the portrait. This will create an automatic selection of the woman's face.



PROJECT 01: PORTRAIT WITH ROSES

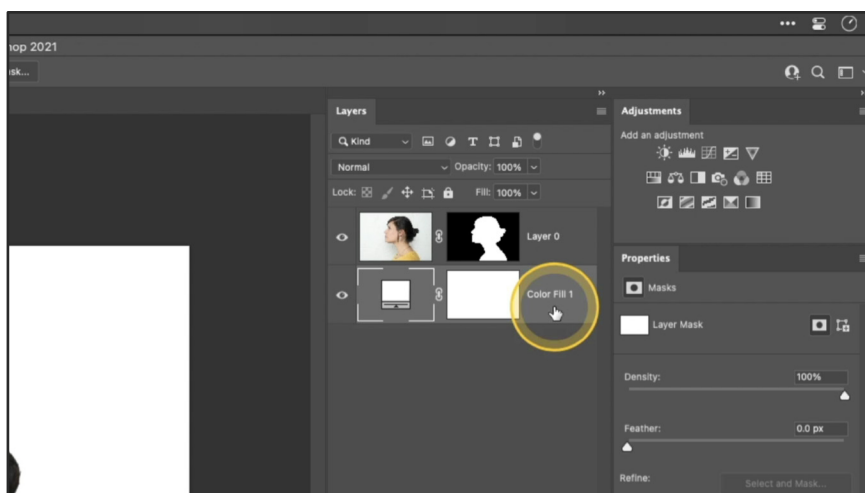
3. Add a layer mask

With the woman's selection still active, click the **ADD LAYER MASK** icon in the Layers panel to add a mask to the layer.



4. Add a white background

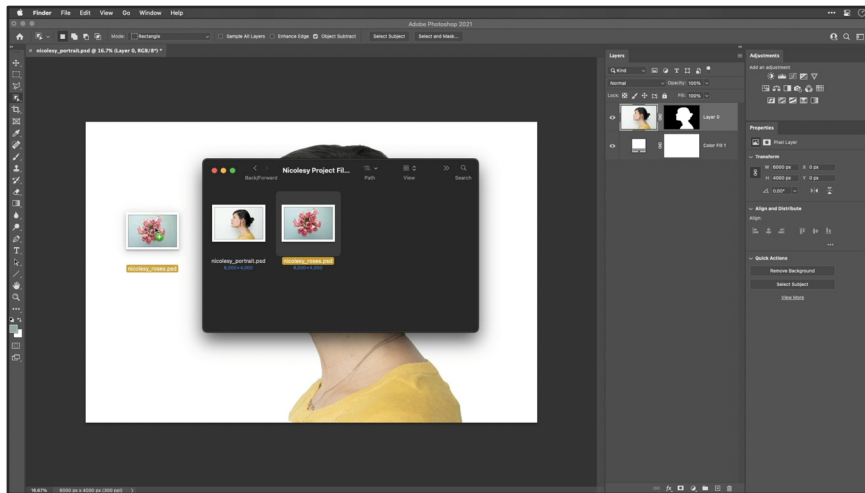
In the Layers panel, click the **CREATE NEW FILL OR ADJUSTMENT LAYER** icon and select the **SOLID COLOR** option. Then, set this to **White** and click **OK**. Then, drag this layer so it is below the portrait layer in the Layers panel. Then, click the top layer to make it active.



ADDING THE OVERLAY

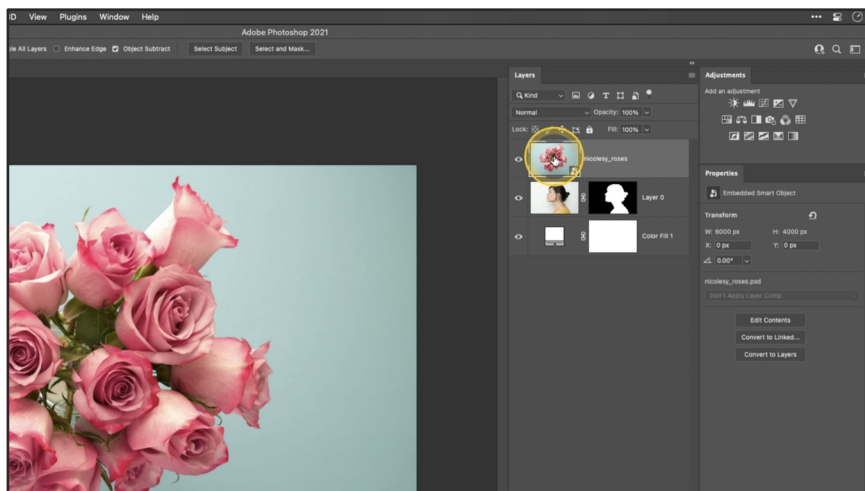
5. Add the overlay to the document

Open the project folder and drag/drop the **NICOLESY_ROSES.PSD** file over the open document. Then, click **RETURN** or **ENTER** to add the image to the document.



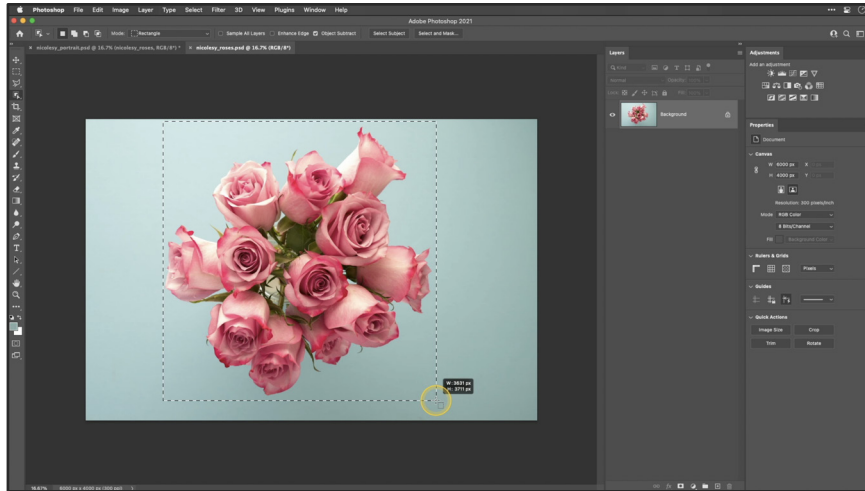
6. Open the Smart Object layer

The roses layer was brought in as a Smart Object (you'll know this because there's a small icon in the lower-right part of the layer thumbnail). **Double-click** this layer thumbnail to open it into a separate window inside of Photoshop.

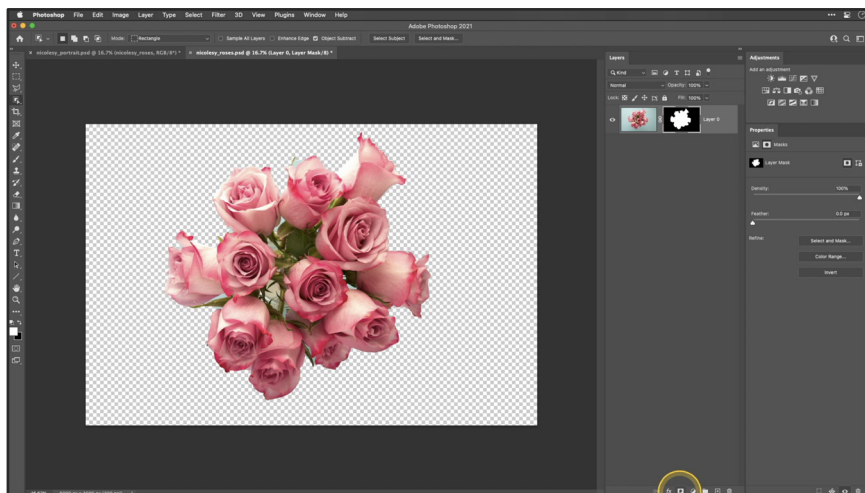


7. Mask the roses

Using the **OBJECT SELECTION** tool, draw a box around the roses to create a selection.



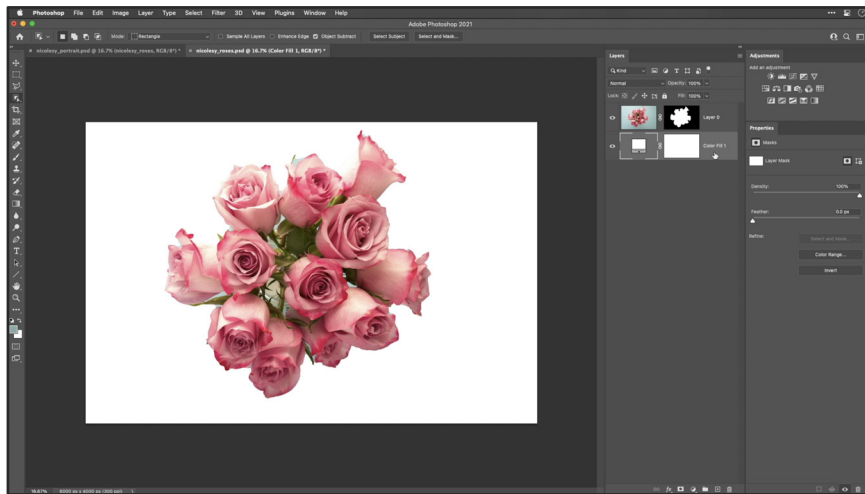
Then, in the **Layers** panel, click the **ADD LAYER MASK** icon to create a mask around the roses.



PROJECT 01: PORTRAIT WITH ROSES

8. Add a color fill layer

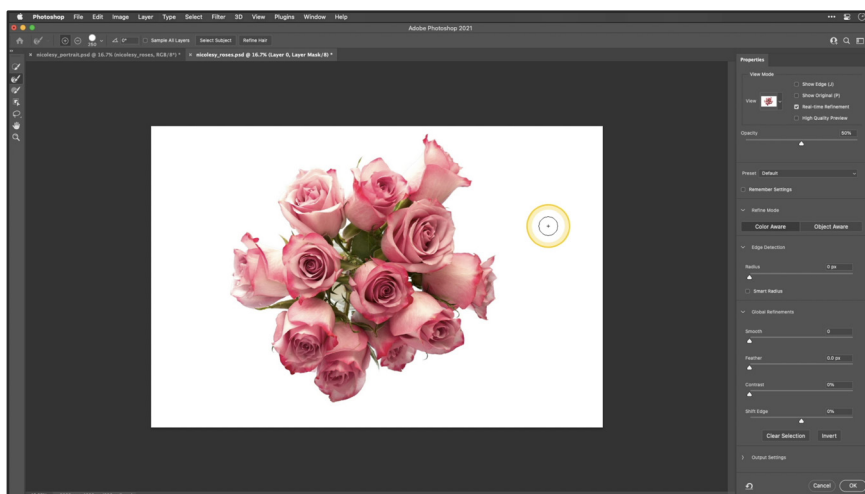
In the Layers panel, click the **CREATE NEW FILL OR ADJUSTMENT LAYER** icon and select the **SOLID COLOR** option. Then, set this to **White** and click **OK**. Then, drag this layer so it is below the roses layer in the Layers panel.



9. Refine the mask

First, **click the mask** icon on the roses layer to make it active. Then, in the **Properties** panel, click the **SELECT AND MASK** button to open the options to refine the mask.

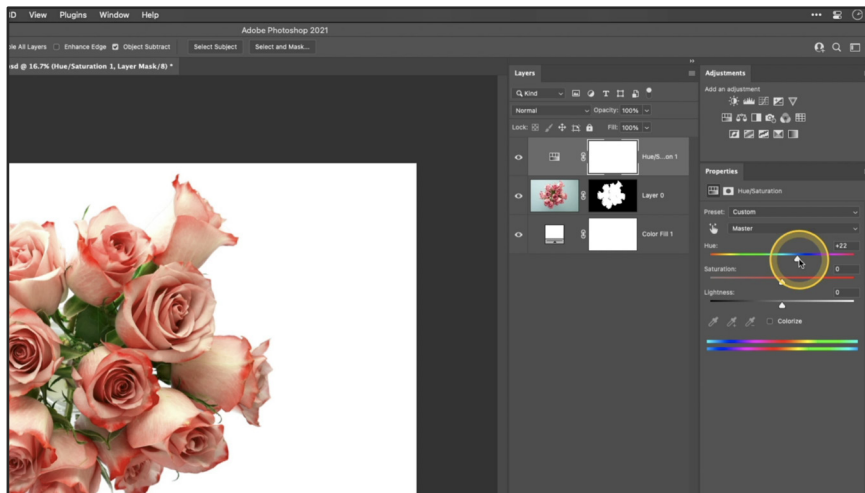
With the mask options opened up, use the **REFINE EDGE BRUSH** to brush over the blue background that is still visible around the roses. When you are finished, click **OK**.



PROJECT 01: PORTRAIT WITH ROSES

10. Change the hue of the roses

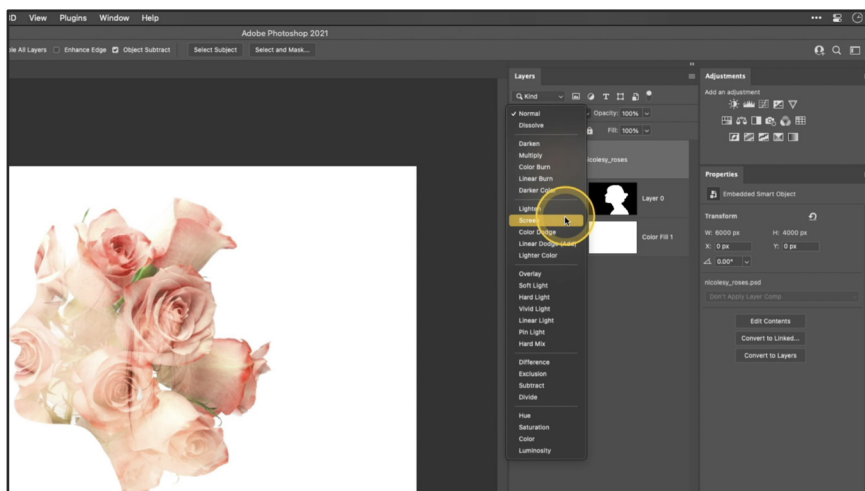
In the **Adjustments** panel, add a **HUE/SATURATION** adjustment layer. Then, increase the **HUE** slider to **+22**.



Next, **save and close this file** to go back to the portrait document. Notice how the edits to the rose file are now visible in the original document.

11. Blend the roses layer

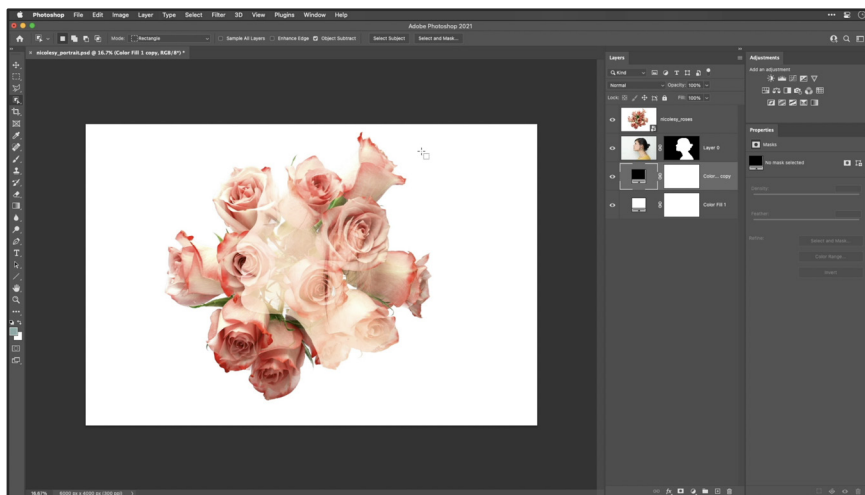
With the top roses layer still active, change the **BLEND** mode to **SCREEN**.



EXPANDING THE OVERLAY

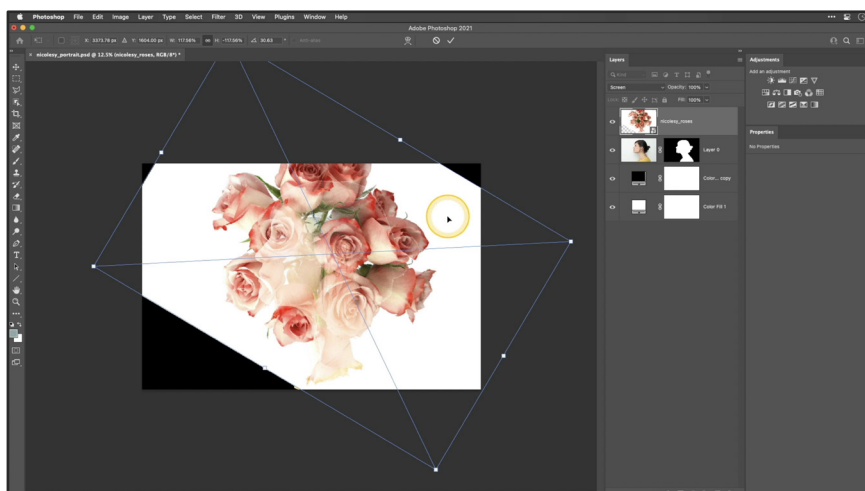
12. Create a black color fill layer

Click the **white color fill layer** at the bottom of the layers panel, and duplicate it with the keyboard shortcut **CMD + J (MAC)** or **CTRL + J (WIN)**. Double-click the new layer's thumbnail to open the color picker, and change the color to **black**. Then click **OK**.



13. Transform the roses

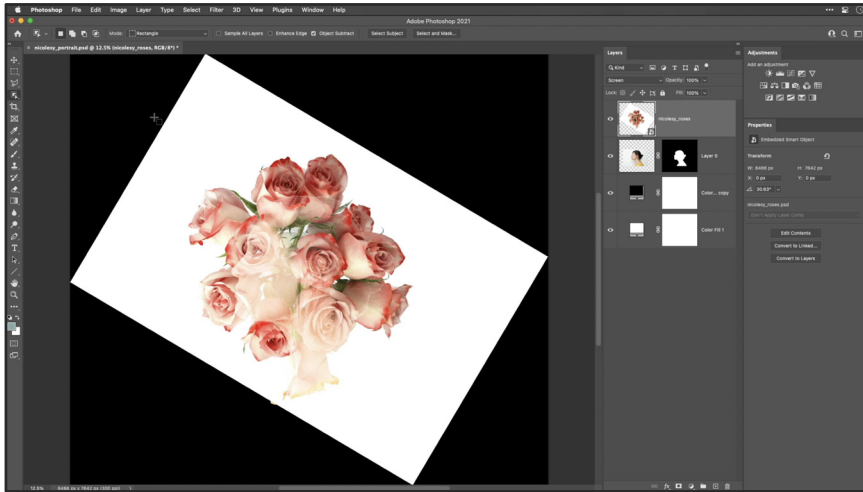
Click the **top layer with the roses**, and use the shortcut **CMD + T (MAC)** or **CTRL + T (WIN)**. Then, in the menu, go to **EDIT > TRANSFORM > FLIP HORIZONTAL**. Next, rotate and resize the roses so that they are positioned over the portrait (refer to the video or the image below for an example of the positioning for this tutorial). Press **Return** or **Enter** when finished transforming.



PROJECT 01: PORTRAIT WITH ROSES

14. Reveal the entire document's layers

Go to **IMAGE > REVEAL ALL** to reveal the layers that are off of the canvas area.

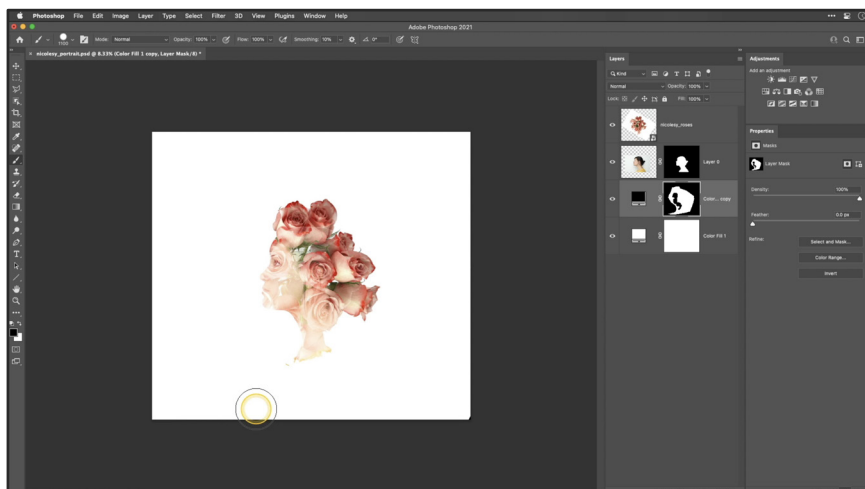


MASKING THE OVERLAY

15. Mask the black Color Fill layer

CLICK THE MASK connected to the **black Color Fill layer** in the Layers panel. Then, activate the **BRUSH TOOL** by using the shortcut **B**. Make sure the brush's **Opacity** is set to **100%**, and the brush's **Hardness** is also set to **100%**.

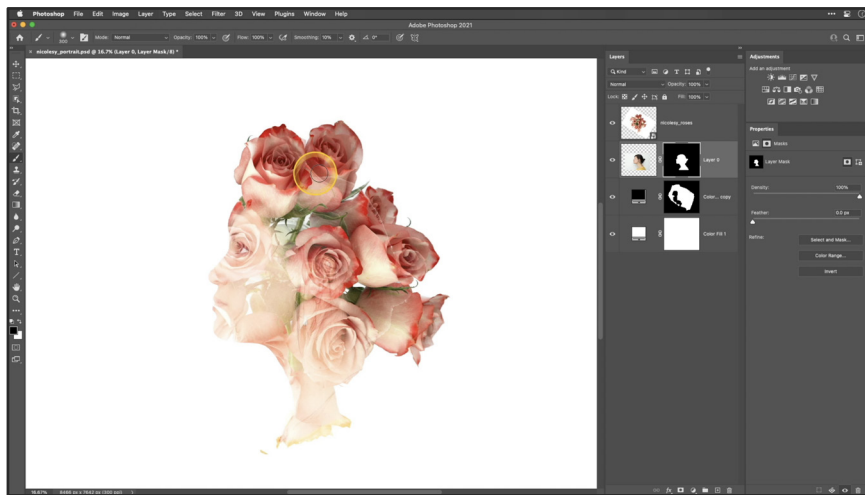
Make sure you are painting with Black, and brush away the parts of the roses in front of the face, as well as the surrounding black areas on the canvas.



PROJECT 01: PORTRAIT WITH ROSES

16. Clean up the mask

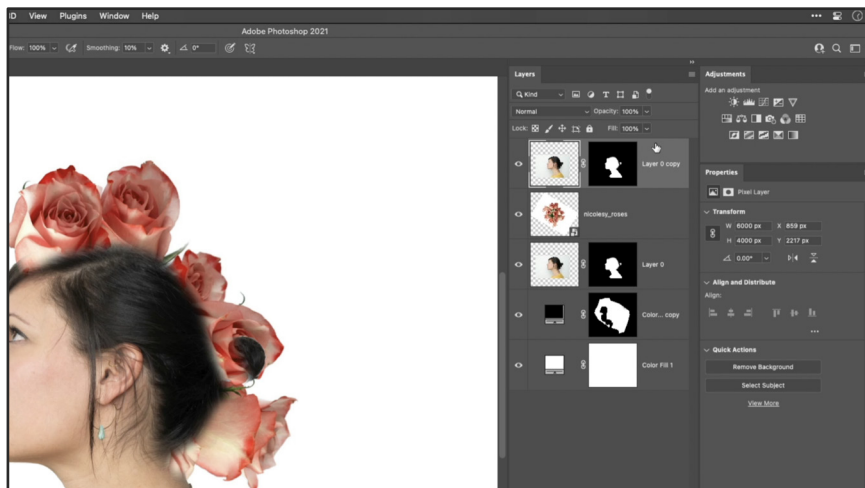
CLICK THE MASK on the **portrait layer**. With the **BRUSH TOOL** still active, set the **Hardness** to **0%**. Then brush over the hairline to remove the white outline.



FINISHING TOUCHES

17. Duplicate the portrait layer

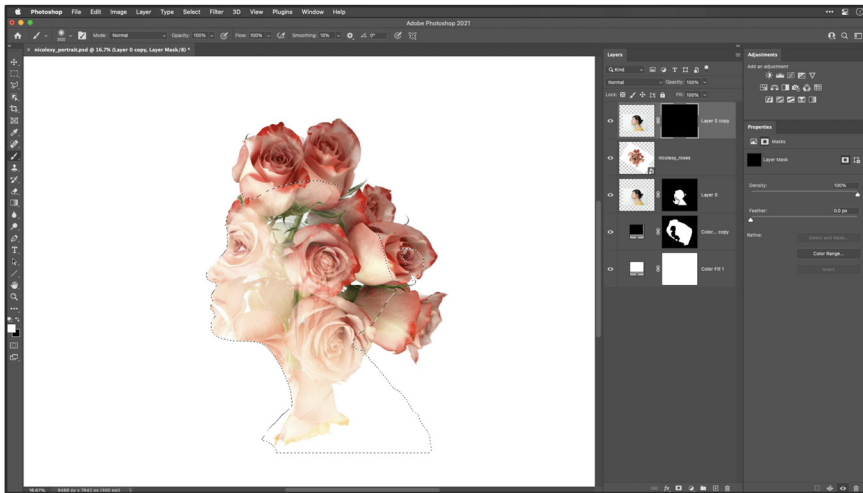
Click on the **portrait layer** to activate it. Then, use the keyboard shortcut **CMD + J (MAC)** or **CTRL + J (WIN)**. Next, drag this layer so it is at the top of the layers panel.



18. Prepare the top mask

First, **CLICK THE MASK** on the **top portrait layer**. Then, make sure that the **background swatch** in the toolbar is set to **BLACK**. Fill the mask with black with the keyboard shortcut **CMD + DELETE (MAC)** or **CTRL + BACKSPACE (WIN)**.

Then, press and hold the **OPT (MAC)** or **ALT (WIN)** key and **CLICK THE MASK** on the **other portrait layer** to make a selection.



19. Mask the lips and eye

Make sure the **BRUSH TOOL** is active, with the **HARDNESS** set to **0%** and the **OPACITY** set to **70%**. Then, brush over the **eye** and **lips** to bring out the details.

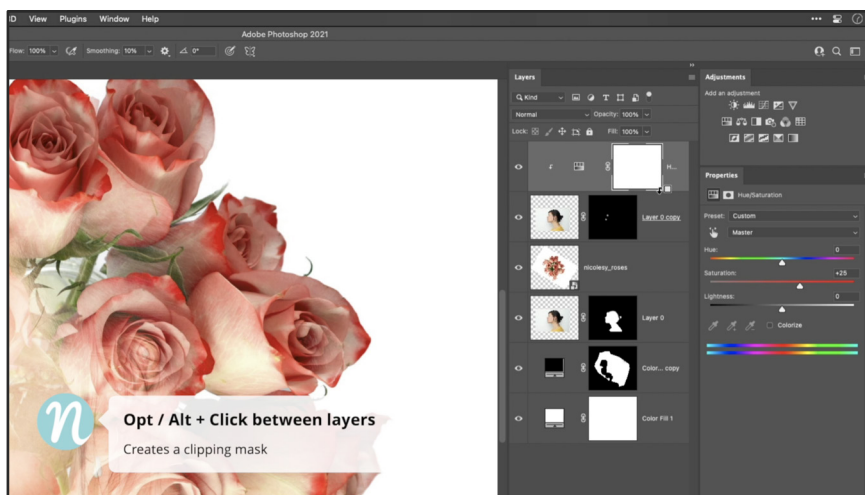


PROJECT 01: PORTRAIT WITH ROSES

20. Add saturation to the lips

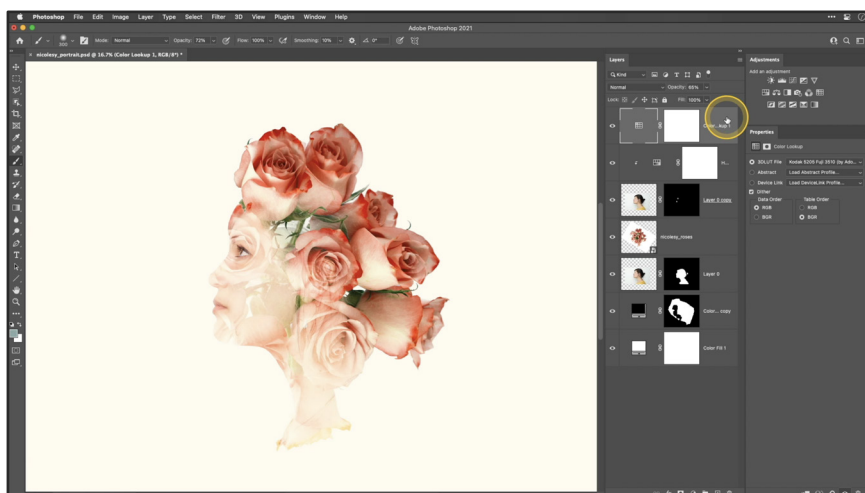
In the **Adjustments** panel, add the **HUE/SATURATION** adjustment. Then, increase the **SATURATION** slider to **+25**.

Press and hold the **OPT (MAC)** or **ALT (WIN)** key and hover in-between the Hue/Saturation and portrait layers. When the icon changes, **click** to clip this layer to only show the saturation on the lips and eye.



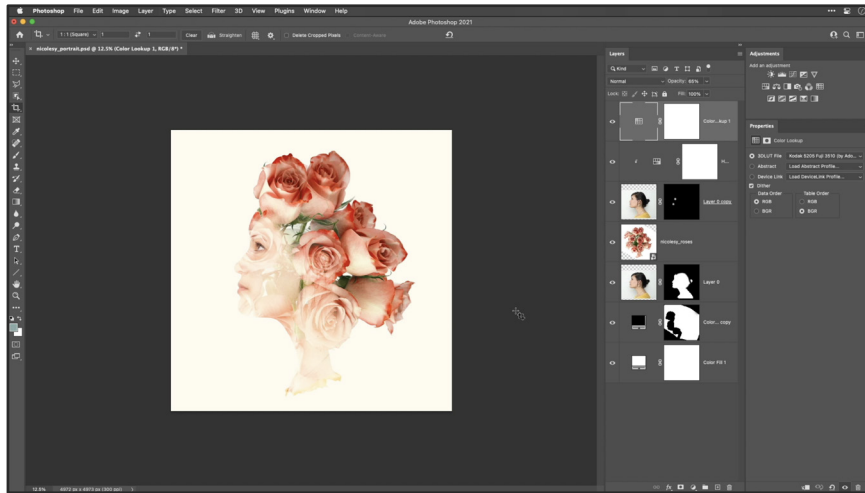
21. Colorize the layer

In the **Adjustments** panel, add the **COLOR LOOKUP** adjustment. In the **Properties** panel, using the **3DLUT File** drop-down, select the **KODAK 5205 FUJI 3510 (BY ADOBE).CUBE** option. Then, reduce the layer's **Opacity** to **65%**.



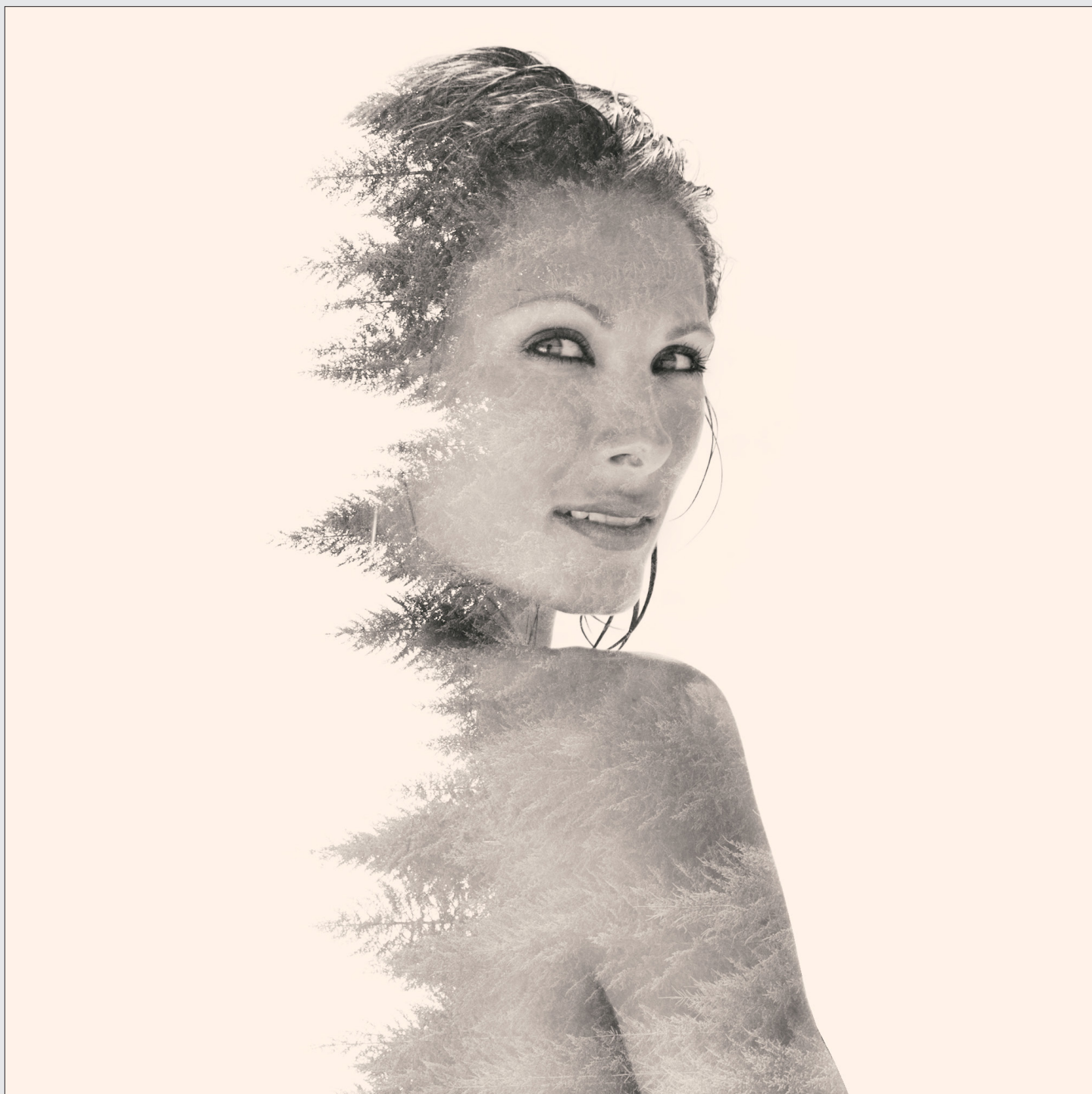
22. Crop the photo

Select the **CROP TOOL** from the toolbar. In the options at the top, set the **Ratio** to **1:1 (SQUARE)**. Then, crop the photo by centering the portrait in the middle of the crop.



PROJECT 02

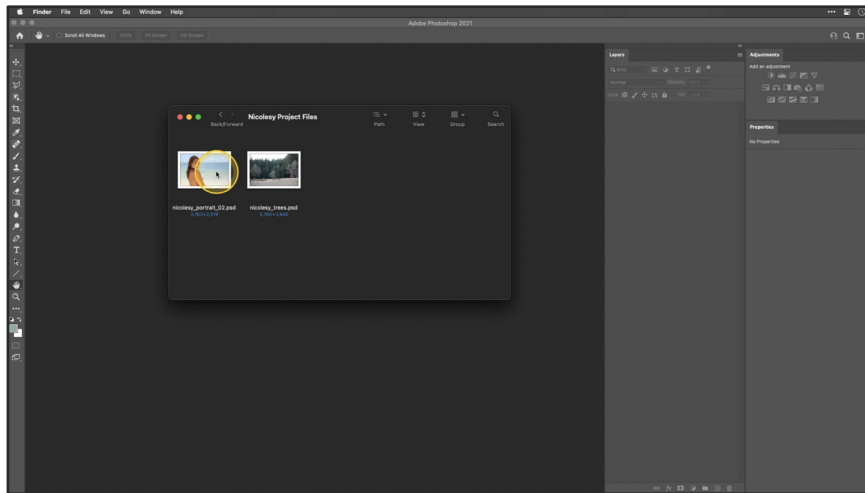
PORTRAIT WITH TREES



MASKING THE PORTRAIT

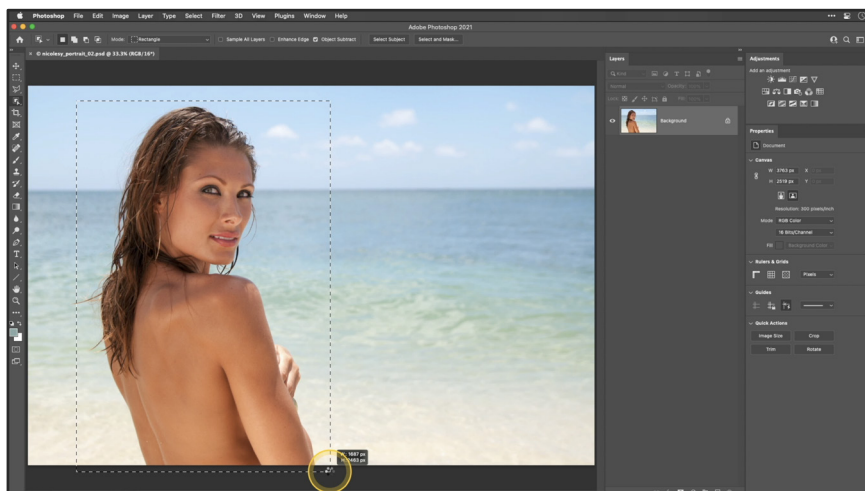
1. Open the portrait image

Double-click the **NICOLESY_PORTRAIT_02.PSD** file to open it into Photoshop.



2. Select the woman

Using the **OBJECT SELECTION TOOL**, drag a box around the woman. Then, release and it will create a selection.

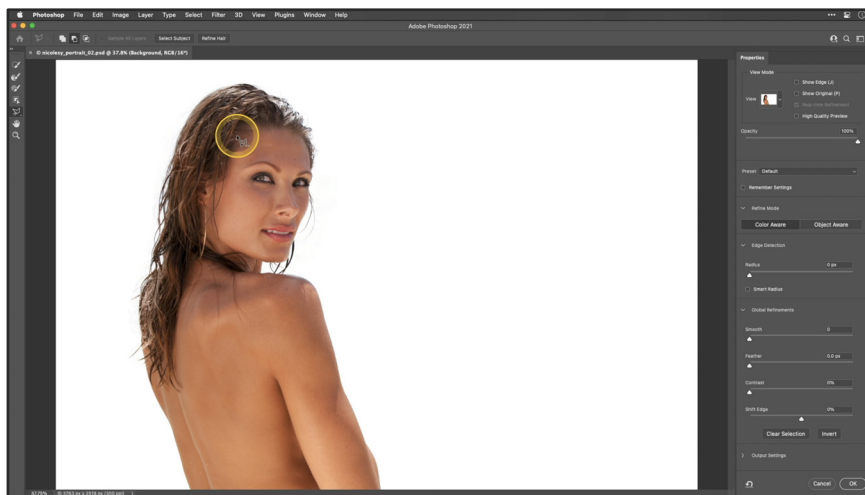


PROJECT 02: PORTRAIT WITH TREES

3. Refine the selection

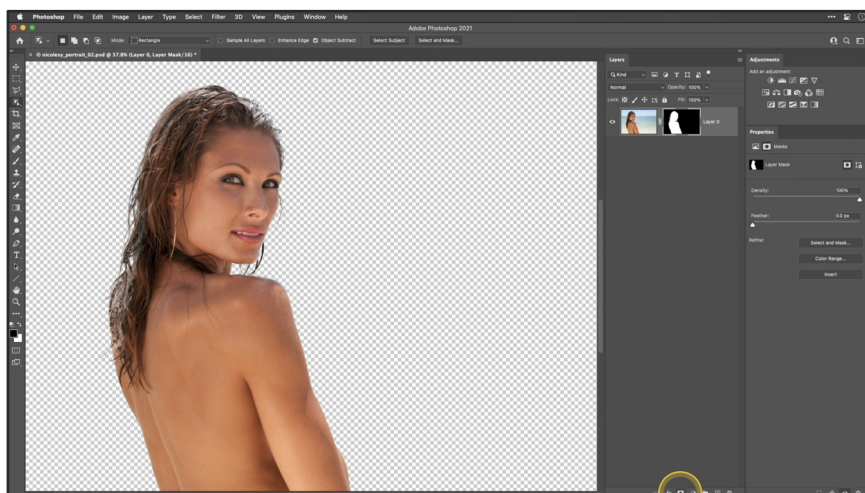
In the **Options bar** at the top, click the **SELECT AND MASK** button. Then, use the **REFINE EDGE** brush to remove the additional background areas from the mask.

Then, select the **POLYGONAL LASSO TOOL** and make sure that **SUBTRACT FROM SELECTION** is clicked at the top. Then, make a selection along the arm to remove the hand, which will clean up her silhouette. Click **OK** on the bottom-right when you are finished.



4. Create a layer mask

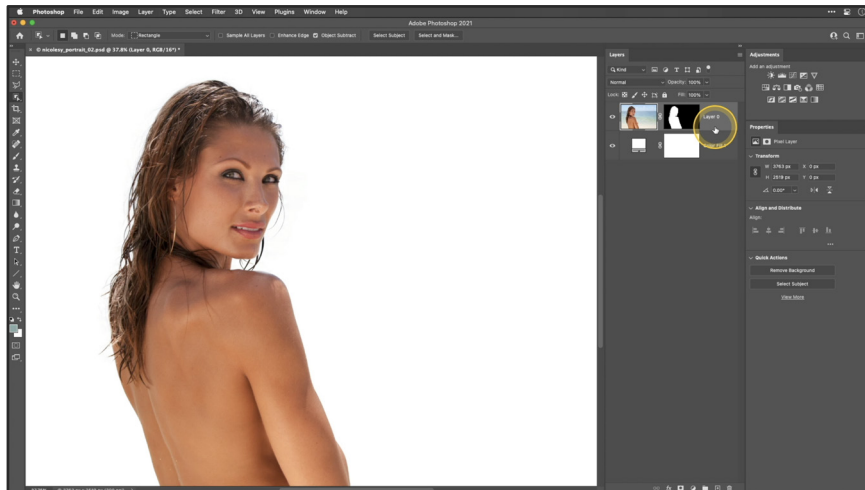
With the selection still active, click the **ADD A MASK** icon in the **Layers panel** to add a mask to the portrait image.



PROJECT 02: PORTRAIT WITH TREES

5. Add a white background

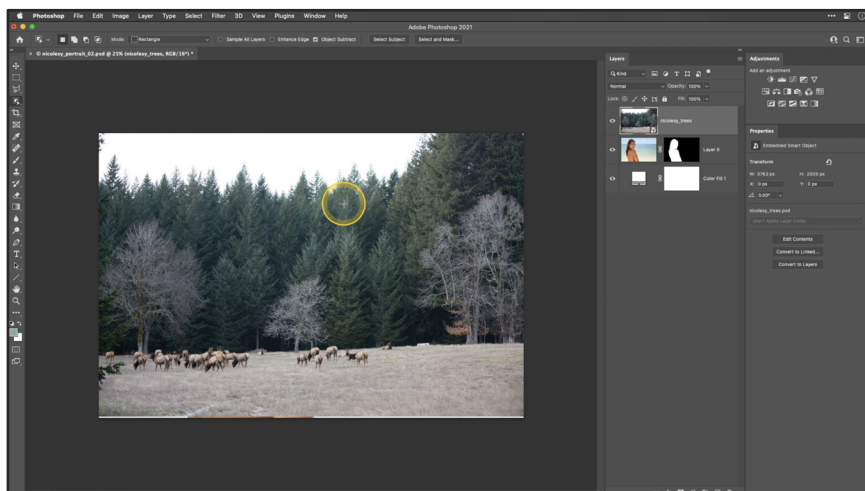
In the Layers panel, click the **CREATE NEW FILL OR ADJUSTMENT LAYER** icon and select the **SOLID COLOR** option. Then, set this to **White** and click **OK**. Then, drag this layer so it is below the portrait layer in the Layers panel. Then, **click the top layer** to make it active.



ADDING THE OVERLAY

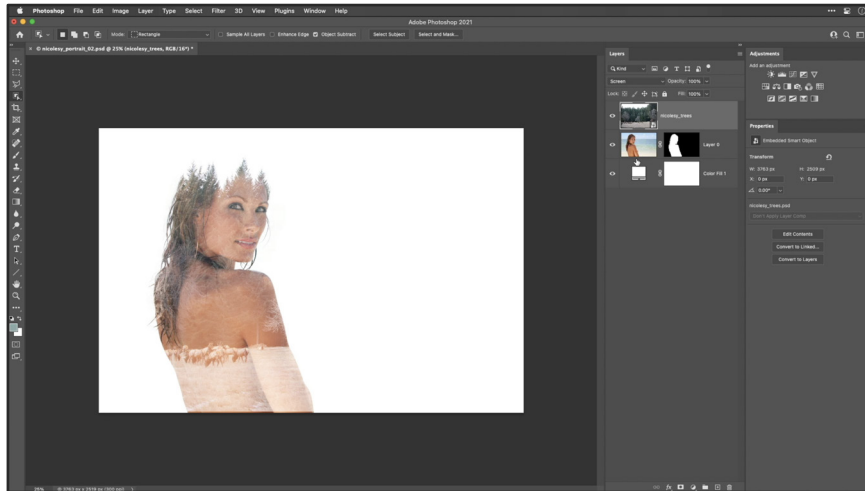
6. Add the tree file to the document

Access the folder of project files. Then, **drag-and-drop** the **NICOLESY_TREES.PSD** file over the top of the Photoshop file. Press **RETURN (MAC)** or **ENTER (WIN)** to add it to the document.



7. Blend the overlay

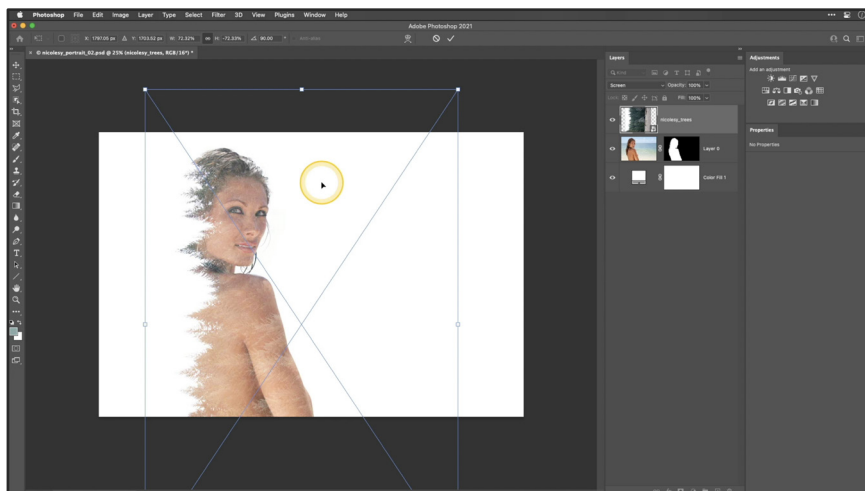
In the **Layers panel**, use the **BLEND** drop-down and select **SCREEN**.



8. Transform the overlay

Use the shortcut **CMD + T (MAC)** or **CTRL + T (WIN)** to access the transform command. Then, rotate the layer counter-clockwise while holding the **SHIFT** key to keep it straight.

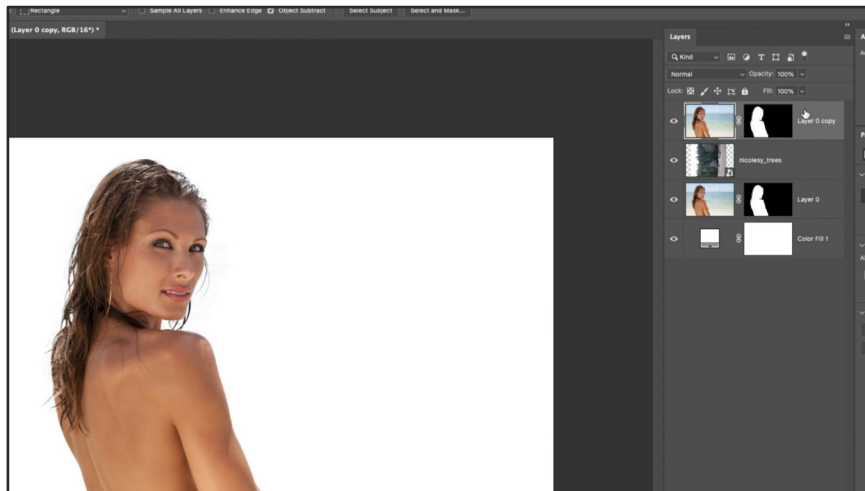
Next, go to **EDIT > TRANSFORM > FLIP VERTICAL**, and resize/reposition the trees layer so it looks similar to the image below or in the accompanying video.



ADDING DETAILS

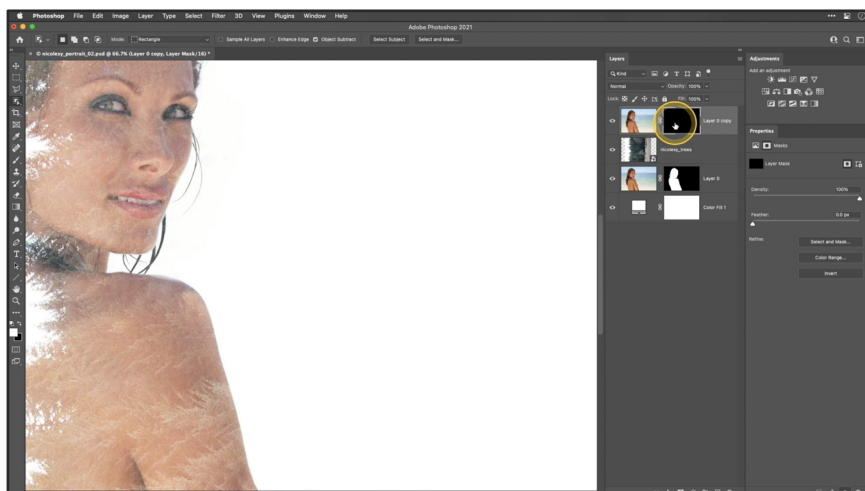
9. Duplicate the portrait layer

CLICK ON THE PORTRAIT LAYER to activate it. Then, use the keyboard shortcut **CMD + J (MAC)** or **CTRL + J (WIN)**. Next, drag this layer so it is at the top of the layers panel.



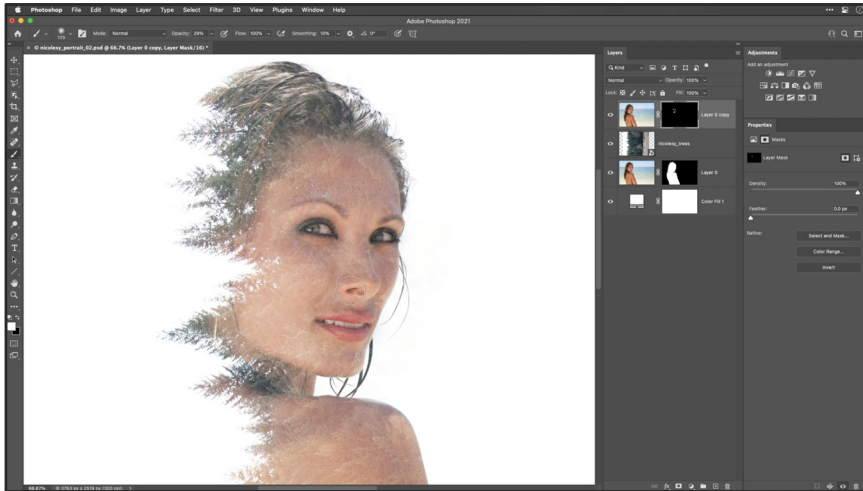
10. Prepare the top mask

First, **CLICK THE MASK** on the **top portrait layer**. Then, make sure that the **background swatch** in the toolbar is set to **BLACK**. Fill the mask with black with the keyboard shortcut **CMD + DELETE (MAC)** or **CTRL + BACKSPACE (WIN)**.



11. Mask the facial features

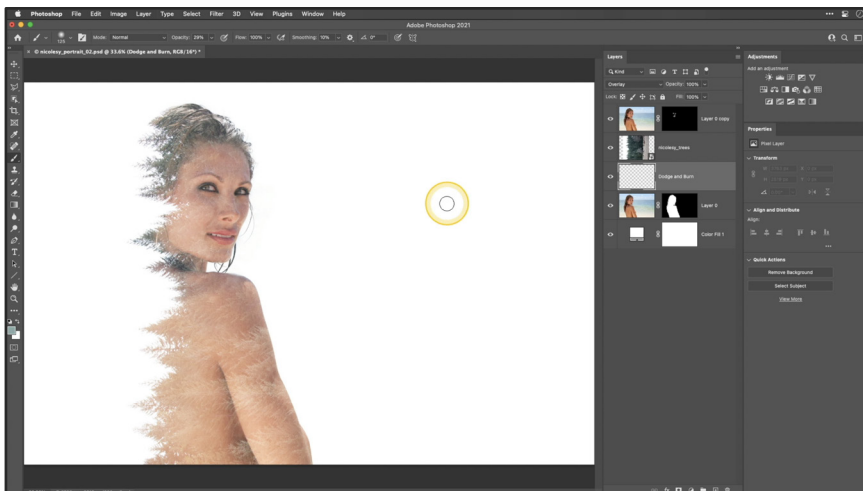
Make sure the **BRUSH TOOL** is active, with the **HARDNESS** set to **0%** and the **OPACITY** set to **30%**. Then, brush over the **eyes, lips, and nose** to bring out the details.



DODGING AND BURNING

12. Set up the dodge and burn layer

In the **Layers panel**, click the **bottom portrait layer** to activate it (just above the white background). Then, add a new blank layer just above this portrait layer. Rename the layer to *Dodge and Burn*. Then, change this layer's **Blend mode** to **OVERLAY**.

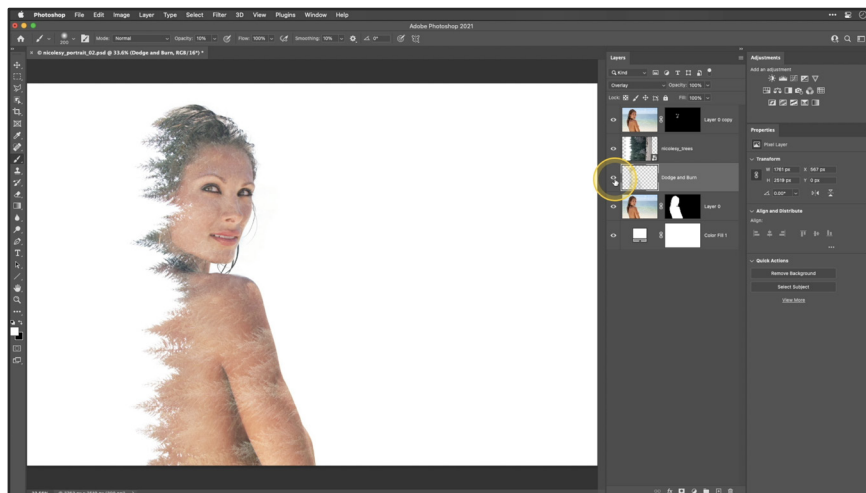


13. Create the dodge and burn effect

Make sure that the **BRUSH TOOL** is active, and that the **Hardness** is set to **0%** and the **Opacity** is set to **10%**. Then, in the toolbar, set the default swatches by pressing **D** on your keyboard.

With **BLACK** as the foreground color, brush over the shadow area by the arm, the outside edge of the arm, the woman's hair, and the tip of the trees on the left.

Then, switch the foreground swatch to **WHITE** with the shortcut **X** and brush over the face to make it brighter.

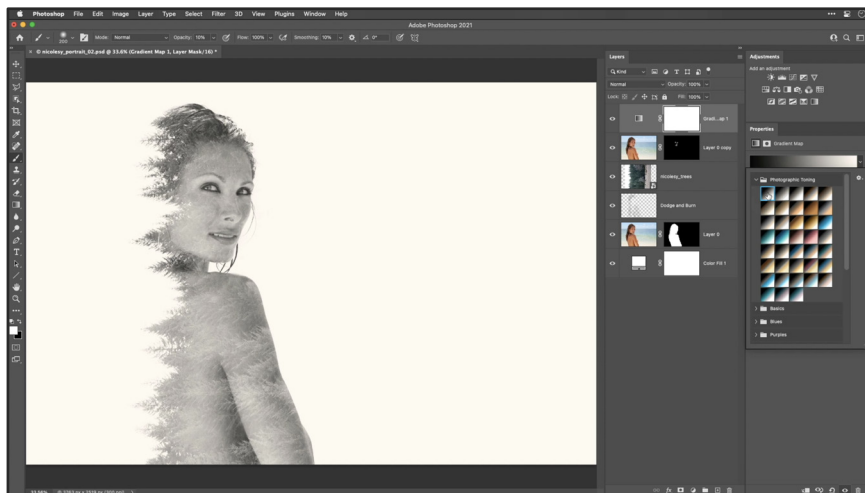


FINISHING TOUCHES

14. Add a Gradient Map

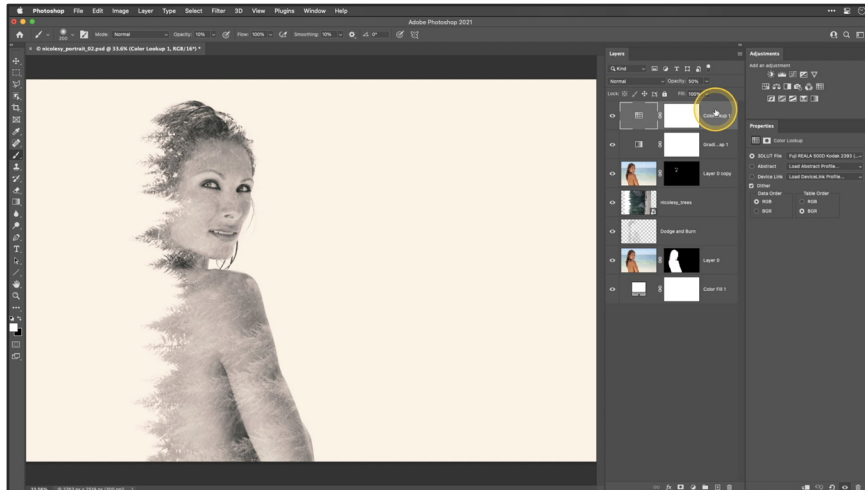
Click the **top layer** in the Layers panel to make it active. Then, in the **Adjustments panel**, add a **GRADIENT MAP** adjustment layer. In the drop-down, select the **LEGACY GRADIENTS > PHOTOGRAPHIC TONING** category and add the **Platinum** gradient to the image.

Note: If you don't have the Photographic Toning category in your list, refer to the video for a tip on how to add this to your collection.



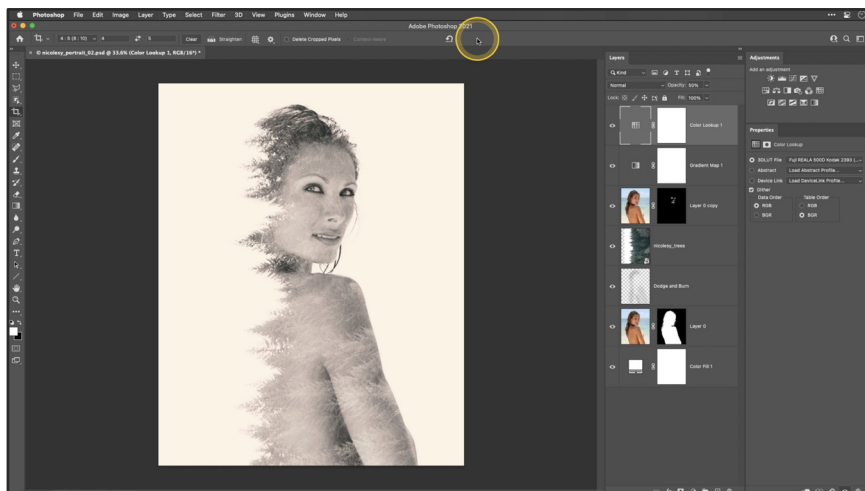
15. Add a Color Lookup adjustment

In the **Adjustments** panel, add the **COLOR LOOKUP** adjustment. In the **Properties** panel, using the **3DLUT File** drop-down, select the **FUJI REALA 500D KODAK 2393 (BY ADOBE).CUBE** option. Then, reduce the layer's **Opacity** to **50%**.



16. Crop the image

Select the **CROP TOOL** from the toolbar. In the options at the top, set the **Ratio** to **4:5 (8 : 10)**. Then, crop the photo by centering the portrait in the middle of the crop.



KEYBOARD SHORTCUTS

DESCRIPTION	MAC	WINDOWS
Move an active selection		Space bar
Decrease/Increase Brush size		[and]
Save your file	Cmd S	Ctrl S
Close a file	Cmd W	Ctrl W
Duplicate a layer	Cmd J	Ctrl J
Keep transformed image centered	Opt	Alt
Brush tool	B	B
Zoom In	Cmd +	Ctrl +
Zoom Out	Cmd -	Ctrl -
Swap foreground/background swatches		X
Fill with background color	Cmd Delete	Ctrl Backspace
Create a selection from a mask	Cmd click	Ctrl click
Deselect	Cmd D	Ctrl D
Create a clipping mask	Opt	Alt
Crop tool		C
Change Brush and Layer opacity		Numbers 0 through 9
Set default black/white swatches		D



Nicole S. Young

BLOG: nicolesyblog.com

STORE: store.nicolesy.com

INSTAGRAM: [@nicolesy](https://www.instagram.com/nicolesy)

YOUTUBE: [@nicolesy](https://www.youtube.com/nicolesy)

Use the link below to access FREE textures, overlays, and skies for sky replacements:

FREE TEXTURES & OVERLAYS